



OKINAWA NEWS UPDATE – MARCH 2021



From L-R: CULTURE GATE to JAPAN digital arts exhibition, EMIL NAKIJIN luxury resort, Hotel Third Ishigaki rooftop

FUN FACT... Karate originated in Okinawa and is still widely practiced in the prefecture today!

IN THE NEWS:

- Naha Airport displays works from new digital arts exhibition **CULTURE GATE to JAPAN**
- Luxurious contemporary design meets minimalist living at newly opened **EMIL NAKIJIN**
- A private hideaway surrounded by nature at the newly opened **U-MUI Forest Villa**
- A perfect base for island hopping in Yaeyama at the newly opened **Hotel Third Ishigaki**

SET TO OPEN:

- Luxury **Feliz Villa Suite Kouri Island View** set to open on Yagaji Island this summer
- **Hotel Torifito Miyakojima Resort** set to open on Miyako Island this March
- Plans for **OMO5 Okinawa Naha** announced by Hoshino Resorts

IN THE NEWS:

Naha Airport displays works from new digital arts exhibition CULTURE GATE to JAPAN



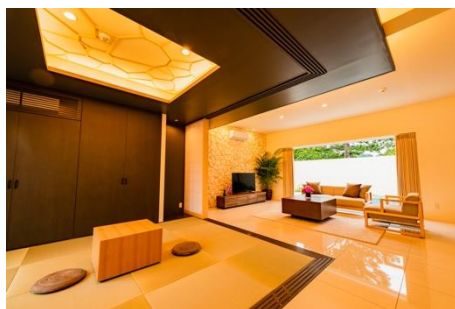
Running from February until at least September 2021 at eight locations across Japan, [CULTURE GATE to JAPAN](#) is a new digital arts exhibition featuring the works of 29 artists offering a new perspective on the diversity of Japanese culture. The theme of the exhibit at Okinawa's Naha Airport is '[MEMORY](#)' and the display features works by two creatives (visual artist **HIGA Satoru** and animator **nuQ**) who have both been inspired by the prefecture's ancient Ryukyu Kingdom. The exhibition website provides a rich variety of information, videos and images so that people around the world can learn about Japan from home and plan trips for the future.

Luxurious contemporary design meets minimalist living at newly opened EMIL NAKIJIN

Opened in October 2020, minimalist luxury resort [EMIL NAKIJIN](#) is one of the newest properties on Okinawa Island. Designed to help guests escape city life and experience a minimalist retreat free from clutter and distraction, the striking property is perched high upon a north facing cliff and is surrounded by serene countryside. The secluded resort offers five beautifully designed suites, each enjoying panoramic ocean views and a private open-air terrace with infinity pool. Prices start from JPY45,000 per night. Image credit: *Koji Fuji / TOREAL*



A private hideaway surrounded by nature at the newly opened U-MUI Forest Villa



On the western coast of Okinawa Island [U-MUI Forest Villa](#), which opened in December 2020, offers 18 private villas surrounded by beautifully manicured gardens and rich forest. Facilities include a fitness centre, golf simulation experience, communal outdoor swimming pool and restaurant serving French cuisine made with fresh local produce prepared according to Okinawa's philosophy that 'food is medicine'. All villas come with a sun garden and outdoor jacuzzi, whereas private pools are also available in the Executive and Luxury Suites. Prices start from JPY78,800 per night for two persons. Image credit: *U-MUI Forest Villa Okinawa*

A perfect base for island hopping in Yaeyama at the newly opened Hotel Third Ishigaki

Opened in 2020, [Hotel Third Ishigaki](#) is an ideal base for travellers looking to island hop around the Yaeyama Region located just a minute walk to Ishigaki Ferry Terminal. Featuring a spectacular roof top terrace where guests can enjoy the sun by day and star-studded sky by night, the hotel also houses a café, bar and book lounge with a library of over 700 publications covering art, travel, culture and business. Contactless check-in is available and room entry is by facial recognition. Room types include suites, family and twin rooms and light refreshments are included in the room price. Prices start from JPY20,000 per night. Image credit: *Hotel Third Ishigaki*.



SET TO OPEN:

Luxury Feliz Villa Suite Kouri Island View set to open on Yagaji Island this summer



Expected to open this summer on Yagaji Island, [Feliz Villa Suite Kouri Island View](#) will comprise eight luxurious self-contained beachfront villas with idyllic ocean views to Kouri Island beyond. Offering all of the modern comforts of home, each villa will boast its own resort-style terrace, private infinity pool leading down to the sea and a fully equipped kitchen. Villas will sleep between two and six adults, making

them an ideal choice for families, groups of friends or those wanting a base for an extended 'workoliday'. Image credit: *Feliz Villa Suite Kouri Island View*

Hotel Torifito Miyakojima Resort set to open on Miyako Island this March

Within easy access of Miyako Airport, [Hotel Torifito Miyakojima Resort](#) is set to open this March offering spacious and contemporary style rooms, each with their own terrace, alongside a seasonal hotel pool and buffet style restaurant. A good base for those wanting to explore Miyako or hop between island groups by plane, the hotel will comprise 207 rooms. Image credit: *Hotel Torifito Miyakojima Resort*



Plans for OMO5 Okinawa Naha announced by Hoshino Resorts



[OMO5 Okinawa Naha](#) with 190 rooms in the vibrant prefectural capital is set to be Hoshino Resorts' first opening in Okinawa under the company's 'OMO' urban tourism hotel brand. OMO hotels not only provide a place to sleep, but also aim to inspire leisure travellers seeking a more personal travel experience and help guests uncover the deeper culture of a destination from convenient city-centre locations. Image credit: *Hoshino Resorts*

ENDS

About Okinawa:

Japan's southernmost prefecture, Okinawa, comprises 160 subtropical islands boasting a year-round warm climate comparable to Hawaii, Miami and Cancun. Just 3 hours by air from Tokyo and blessed with incredible natural beauty, from lush forests to crystal blue waters with abundant coral and golden sands, Okinawa is perfect for beach lovers and sport enthusiasts alike whilst still appealing to culture seekers thanks to its unique history and heritage.

Using the bountiful fresh produce its natural environment produces, Okinawa's culinary culture is also unique and is believed to be a key factor in Okinawa's status as one of five longevity hotspots in the world.

For further media information and images contact:
Be Okinawa – UK & Ireland Representative, Rebecca Pasha E: rebecca@humewhitehead.co.uk /
T: +44 (0) 203 375 4054